



## ARC280-DC / ARC400 -DC

Saldatrici rotanti a corrente continua a 2 e 4 poli con spazzole

- > Protezione: IP 21, IP 23 su richiesta.
- > Tipo di elettrodi saldabili: tutti i tipi inclusi basici e cellulosici.
- > Fornita di protezione termica contro i sovraccarichi. Utilizzabile anche come alternatore
- > Forme costruttive: IM B34 - B3/B14, IM B35 B3/B9, IM B35 - J609b, SAE 3, SAE 4, SAE 5

2 and 4 poles direct-current brushes rotating welders.

- > Protection: IP 21, on request IP 23
- > Weldable electrodes: all types, included basic and cellulosic.
- > Supplied with autoresettable thermal breaker against overload. Can also be used as alternator.
- > Shapes: IM B34 - B3/B14, IM B35 B3/B9, IM B35 - J609b, SAE 3, SAE 4, SAE 5

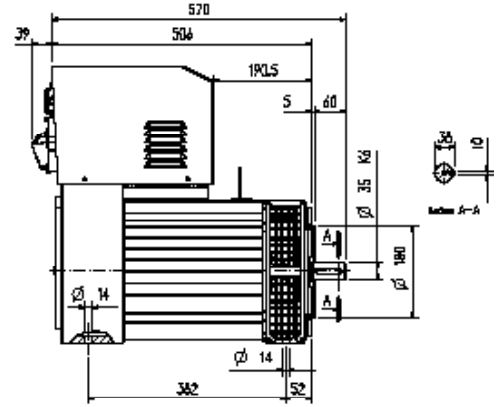
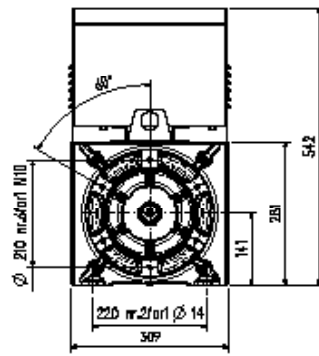
### Caratteristiche tecniche saldatrice • Technical characteristics welder

tipo type	velocità speed	mass	corrente di saldatura DC welding current DC	tensione di innesco strike voltage	tensione di saldatura welding voltage	servizio duty	potenza assorbita driving power
	rpm	Kg	A	V	V		
AR4 MGT	1500	110	40÷280	70	21,6÷31,2	280•35%	280A: 13.6 kW - 18.5 Hp
AR2 MGT	3000	110	40÷400	70	21,6÷36,0	400•35%	400A: 22 kW - 30 Hp
AR4 MGT	1800	110	40÷280	70	21,6÷31,2	280•35%	280A: 13.6 kW - 18.5 Hp
AR2 MGT	3600	110	40÷400	70	21,6÷36,0	400•35%	400A: 22 kW - 30 Hp

### Caratteristiche tecniche alternatore • Technical characteristics alternator

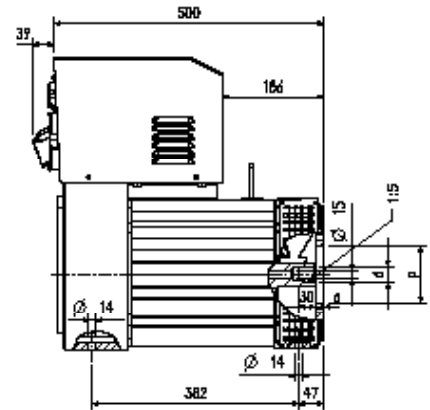
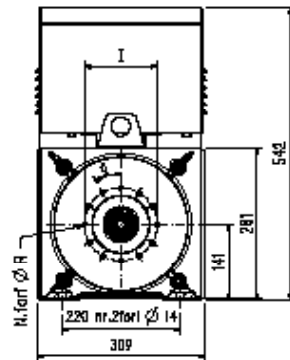
tipo type	Trifase (p.f.=0.8) • Three phase (p.f.=0.8)				Monofase (p.f.=1) • Single phase (p.f.=1)			
	potenza power	tensione voltage	corrente (max S1) current (max S1)	frequenza frequency	potenza power	tensione voltage	corrente (max S1) current (max S1)	frequenza frequency
	(S1)- kVA	V	A	Hz	(S1)- kVA	V	A	Hz
AR4 MGT	8	400	11,5	50	3,0	230	13,0	50
AR2 MGT	10	400	14,4	50	4,0	230	14,6	50
AR4 MGT	10	416	13,9	60	4,0	240	16,6	60
AR2 MGT	12	416	16,6	60	5,0	240	20,8	60

## forma costruttiva / shape IM B34 - B3/B14 cod. E



## forma costruttiva / shape IM B35 - B3/B9 cod. B/G

albero - shaft			Flangia - Flange				cod.
d	a	l	p	N.fori - N.holes	R	g	
30	16	135	105	12	9	30°	F
38	5	150	125	4	12	90°	

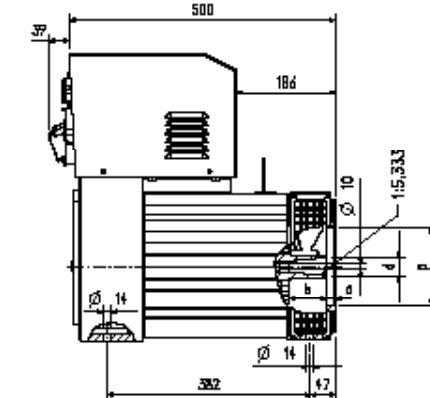
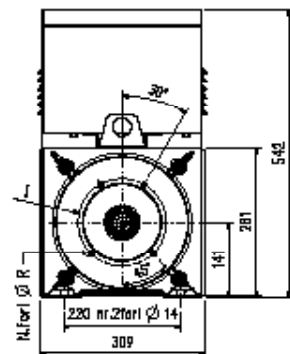


## forma costruttiva / shape IM B35 - J609b cod.F

albero - shaft			cod.
d	a	b	
35	12,4	71	F

Flangia - Flange			
l	p	N.fori - N.holes	R
165	146,1	4	11
197	163,6	4	11
197	177,8	4	11

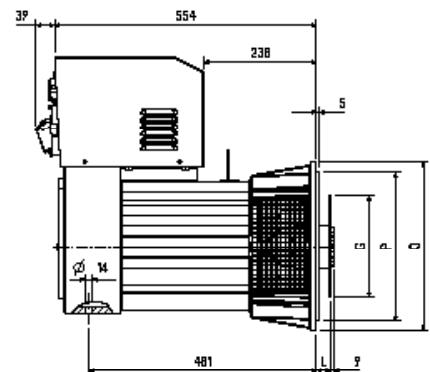
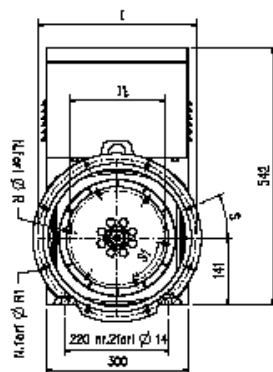


## forma costruttiva / shape SAE cod. 3/4/5

SAE	Flangia - Flange					
	Q	P	l	N.fori - N.holes	R1	S
3	452	409,6	428,6	12	11	15°
4	405	362	381	12	11	15°
5	358	314,3	333,4	8	11	22° 30'

SAE	Giunto a dischi - Disk joint					
	L	G	l1	N.fori - N.holes	R	S1
6,5	30,2	215,9	200	6	9	60°
7,5	30,2	241,3	222,2	8	9	45°
8	62	263,5	244,5	6	9	60°
10	53,8	314,3	295,3	8	11	45°
11,5	39,6	352,4	333,4	8	11	45°



www.sincromotors.com ARC 280-DC / ARC 400-DC - 11/2010